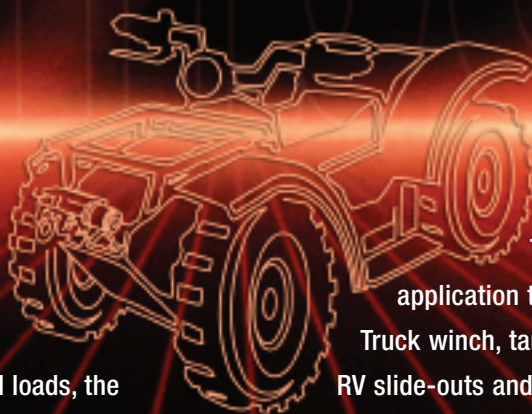


SPDT Metal DC Contactor



Power up fast with the SPDT Metal DC Contactor from Trombetta. With higher in-rush capability and the ability to carry higher electrical loads, the SPDT handles the initial thrust at the start and the ability to deliver the power required for tough jobs.



The SPDT is perfect for any application that requires reversing motion: Truck winch, tarp systems, boatlifts, RV slide-outs and RV leveling systems.

TROMBETTA 
DC Power Solutions for a Harsh World

SPDT DC Contactor Specifications

Coil Terminals	1 or 2 : 10-32 Stud(s)
Contact Studs	(4) 5/16-24 Studs Standard & Long (see drawing)
Mounting Bracket	Flat or Curved, open or closed slots
Standard Operating Temperature Range	-40° C to 85° C
Contact Terminal Torque	35 lbs
Coil Terminal Torque	15 lbs

Coils

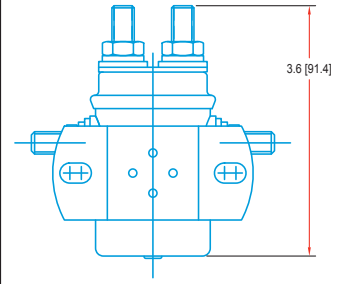
Contact

Model	Max Sustained Duty Cycle ¹	Max On Time	Pull In Voltage ²	Hold Voltage ²	Coil Resist Ohms	Resistive Load Carry/Interrupt Capability (Amps) ³	Inductive Load Carry/Interrupt Capability (Amps) ³	Peak Inductive Inrush Capability (Amps) ⁴	Electrical Cycle Life	Contact Material
12V Intermit.	20%	30 Seconds	6.0	2.0	3.6	300/200	300/200	700/500	50,000	Copper
12V Intermit.	60%	10 Seconds	7.0	2.3	7.1	250/150	250/150	600/400	50,000	Copper
12V Cont.	100%	Cont.	8.0	2.5	14.4	125/100	125/100	500/300	50,000	Copper
24V Cont.	100%	Cont.	14.0	5.0	40.0	125/100	125/100	500/300	50,000	Copper
36V Cont.	100%	Cont.	27.5	7.5	130.0	125/100	125/100	400/250	25,000	Copper

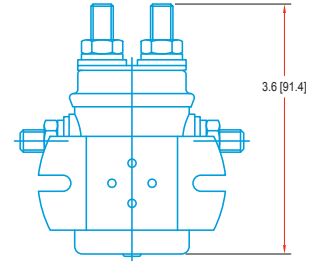
Contacts are Normally Open/Normally Closed on All Models

¹Nominal coil voltage applied starting from 25° C DC Contactor temperature. Duty Cycle=On Time/(On Time + Off Time). ²Voltages listed are minimum required at 25° C coil temperature. Minimum voltage requirements will increase with coil temperature. ³Amps at Max Duty Cycle. ⁴Risetime ≥ 3 milliseconds to 80% of peak inrush with linear decay to run (carry) current in ≤.1 seconds.

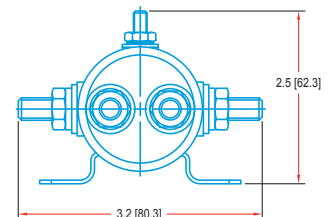
TYPICAL DIMENSIONS



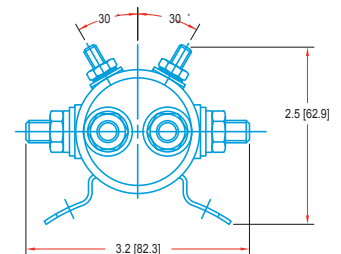
BOTTOM VIEW



BOTTOM VIEW



FRONT VIEW



FRONT VIEW

