

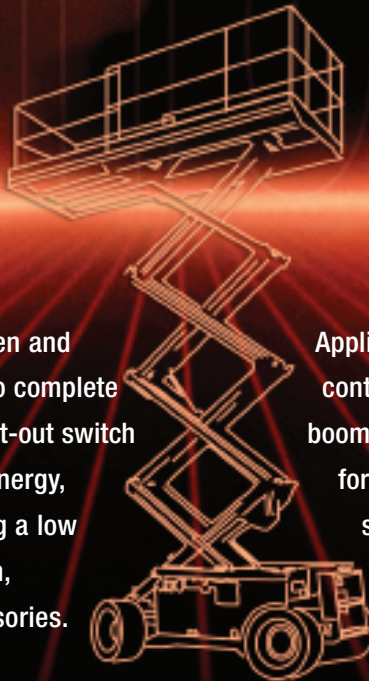
# D500/600 Solenoid Families

*"The Pull of High Energy with  
Cool continuous control."*



The D500 & 600 Families offer a proven and reliable electromechanical approach to complete a pull and hold function. An integral cut-out switch for dual winding coils provides high energy, pulling performance while maintaining a low powered continuous holding operation, without the need for additional accessories.

Applications that require two speed throttle controls such as diesel engines, scissor and boom lifts are perfect matches for the high force and continuous hold that these solenoids provide.



**TROMBETTA**   
DC Power Solutions for a Harsh World

## D500/600 Industrial Work Solenoid Families

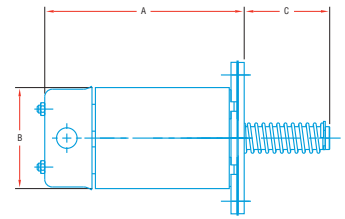
### D500/600 Industrial Work Solenoid Family

Series	Max Stroke	Max Force	A Inches [mm]	B Inches [mm]	C Inches [mm]
D513	1 1/2	14	3.90 [99.1]	2.00 [50.8]	Length variable
D610	1	14	3.50 [88.9]	1.60 [40.6]	Length variable

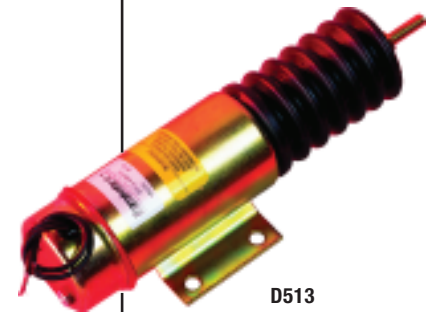
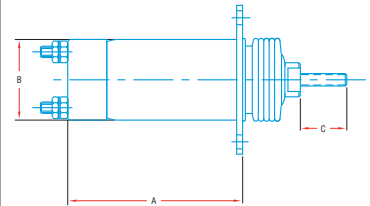
### General Specifications

Series	Pull Current Amps	Hold Current Amps	Pull Force	Hold Force At Rated Voltage and 25° C	Shipping Weight
D513 12v @ 1 1/2 Stroke	68	0.9	13.9 lbs	37 lbs	2.6 lbs.
D513 12v @ 1 1/2 Stroke	36	0.4	13.9 lbs	37 lbs	2.6 lbs.
D610 12v @ 1" Stroke	42	0.8	14 lbs	27 lbs	1.7 lbs.

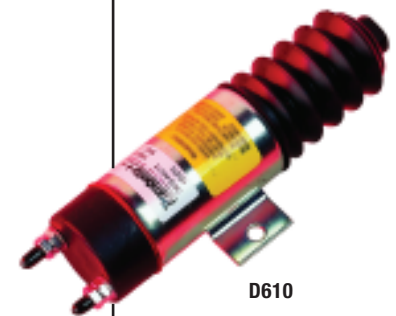
D500



D600



D513



D610