

# J1939 Bus Splitter

This CAN bus splitter provides a cost effective and space efficient way of connecting multiple devices to the J1939 CAN bus. This module reduces cost by eliminating Y adapters and extra harnesses typically used to provide additional connections to the bus.

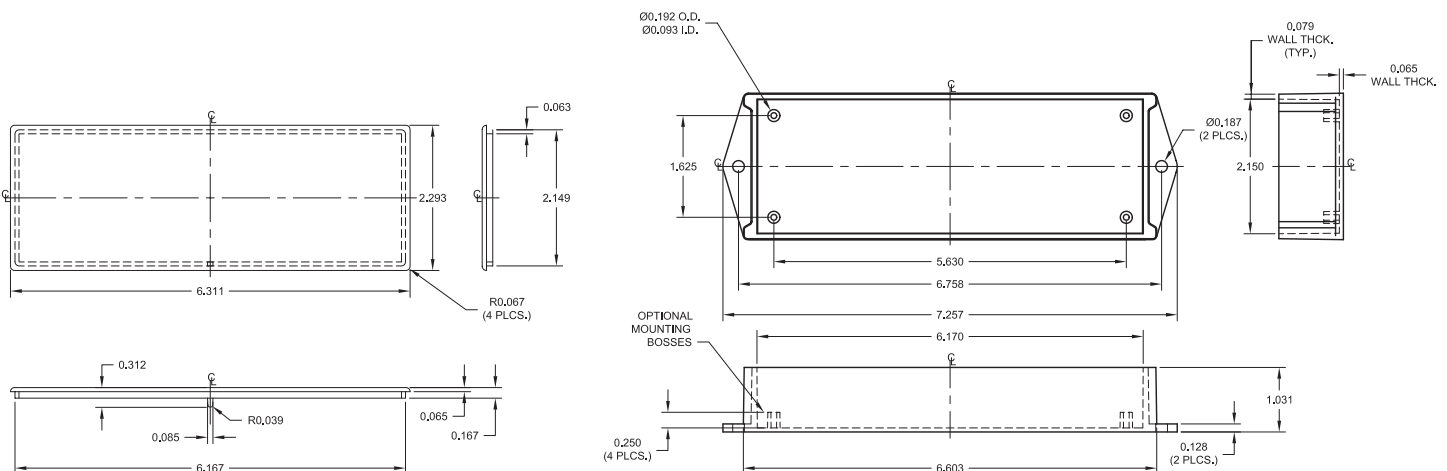


**99-0090**

## PRODUCT FEATURES

- Reduces bus harnessing
- Reduces actual and production costs
- Reduces bus connections increasing quality & durability
- Eases troubleshooting of harnesses
- Potted for a true IP67 rating
- Operating & storage temp rating  
-45°C to +85°C
- 7 x Deutsch Connectors  
21 x Nickel Plated Pins
- Rugged ABS Housing

99-0090	DTF13-3P	DTF13-3P	DTF13-3P	DTF13-3P	DTF13-3P	DTF13-3P	DTF13-3P
	J1	J2	J3	J4	J5	J6	J7
CAN HI	1	1	1	1	1	1	1
CAN LO	2	2	2	2	2	2	2
GRD	3	3	3	3	3	3	3



**TROMBETTA**  
DC Power Solutions for a Harsh World